



Rodowód gołębia

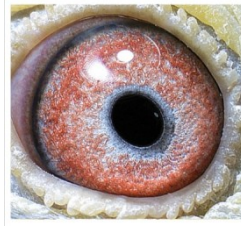
**PL-0290-24-3859**

oryg. E. D. E. Zygmunt, 9 As Oddziału

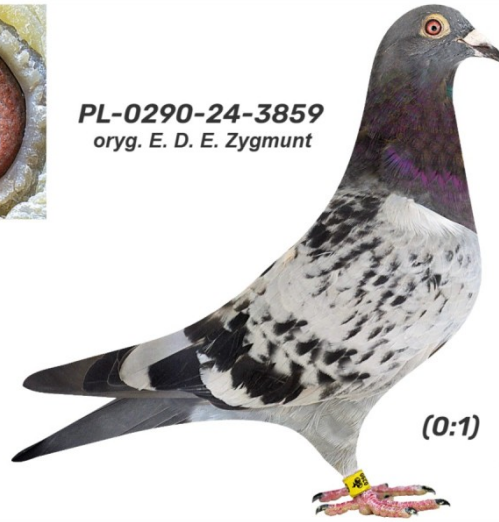


**Ludzki Gest 2024**

tel.: 664 477 422 [www.naszehodowle.pl](http://www.naszehodowle.pl)



**PL-0290-24-3859**  
oryg. E. D. E. Zygmunt



(0:1)

\_\_\_\_\_ ♂

\_\_\_\_\_ ♀

♂ \_\_\_\_\_

\_\_\_\_\_ ♀

♂ \_\_\_\_\_

\_\_\_\_\_ ♀