



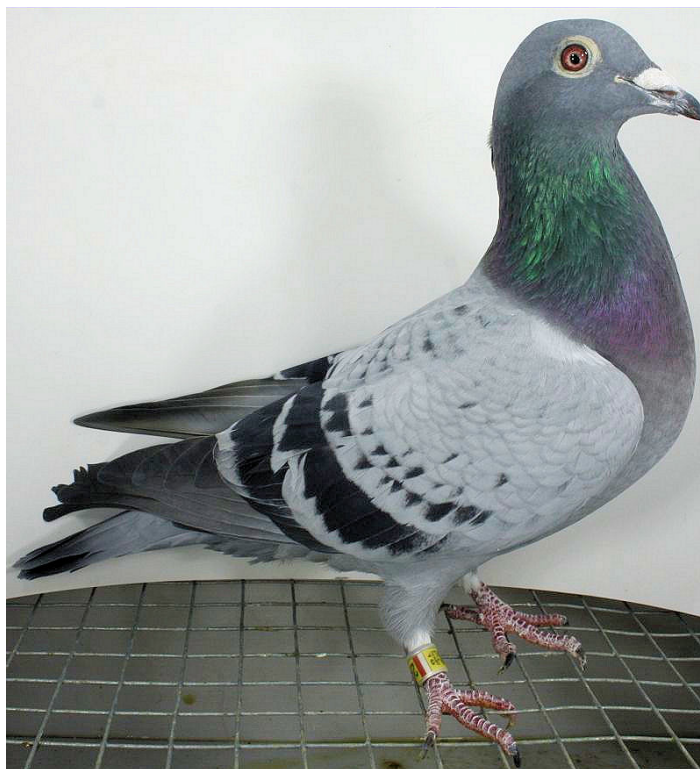
Rodowód gołębia

PL-DB-19-269316

oryg. Reinhard & Ina Muhl (Vandenabeele/De Beer),
wnuczka "Rudy", "Parwnuczka "De Gus"



Lademann Zdzisław
tel.: 604 424 811 www.naszechodowle.pl



BELG-2013-3159369

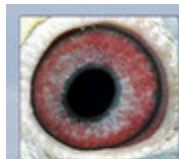


oryg. G. Vandenabeele, syn "Rudy"

DV-07107-13-728

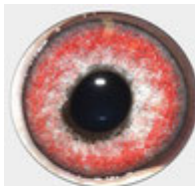


oryg. Dirk De Beer, córka "Bomber", wnuczka "De Gus"



B-13-3159369 V

Sohn "Rudy"



07107-13-728 W



BELG-2006-3008003



oryg. Gaby Vandenabeele, "Rudy",
syn "Bliksem"



BELG-2009-6332281



oryg. Herman Lenaerts, "Bomber"

DV-07107-09-336



oryg. Dirk De Beer, córka "De Gus"

19 prov Bourges 1279 p.
28 prov Argenton 2124 p.
76 prov Tours 2791 p.
• Sire of Bliksem
• Sire Super Romeo 1 mat. Ace LD
• Sire New Bliksem 1 mat. Tulle
• Brother Spice Girl, dam 1 mat. Argenton
• Half brother sire Yves, sire Harry,
dam Ballon, Monty, Captain Blue,
Schone Bliksem, Blouse Bliksem etc.
• Sire Super Romeo
1 mat. New Lady Cornelia 14 4028 p.
1 mat. Tour 1202 p.
1 mat. Tour 1202 p.
• Sire New Bliksem
1 mat. Tulle 1072 p.
1 mat. Tour 1072 p.
1 mat. Tour 1072 p.
• Sire of Rudy
1 mat. Super Queen 14302 p. (2004)
1 mat. Victoria 1072 p.
1 mat. Tour 1072 p.
1 mat. X. Marekcon 1072 p.
19 prov. Tours 2002 p.
19 prov. Tours 2002 p.

B3008003-06
Rudy



• Sire of Rudy
1 mat. Super Queen 14302 p. (2004)
1 mat. Victoria 1072 p.
1 mat. Tour 1072 p.
1 mat. X. Marekcon 1072 p.
19 prov. Tours 2002 p.
19 prov. Tours 2002 p.
• Grandson of Ace
1 mat. Super Queen 14302 p.
1 mat. La Bourrasque 10110 p.
1 mat. Super Queen 14302 p.
1 mat. Super Queen 14302 p.
1 mat. Super Queen 14302 p.
1 mat. Argenton 2004 p.
1 mat. Argenton 2004 p.
1 mat. Argenton 2004 p.
1 mat. Bourges 2004 p.

Gaby Vandenabeele